

# BATTERSEA POLYTECHNIC

LONDON, S.W.11.

Principal: G. F. O'RIORDAN,  
B.Sc.(Eng.), F.R.S.E., M.I.Mech.E., M.I.A.E.

## DEPARTMENT OF HYGIENE AND PUBLIC HEALTH.

Head of Department: EVELYN WILKINS, B.A. Sociology (Lond.).

### COURSES FOR NURSES.

1. Health Visitor's Certificate. Day Course (minimum six months). Beginning in September, January and April.

Evening Refresher Course for existing Health Visitors.

2. Battersea Polytechnic Sister Tutor's Certificate and University of London Diploma in Nursing (Part A, and Subjects 8 and 10 of Part B). Day (minimum six months); Evening (two years).

3. Intending Probationers. Preparatory Courses in Hygiene and Housecraft (two years). Shorter Courses can be arranged in Hygiene only.

FULL PARTICULARS ON APPLICATION TO  
THE PRINCIPAL.

# Roboleine

THE FOOD THAT BUILDS THE BODY

HAS BEEN PRESCRIBED BY DOCTORS  
FOR OVER 20 YEARS IN CASES OF

**Anæmia, Debility,**

**Malnutrition**

and especially in

**Tuberculous Conditions**

ROBOLEINE is a valuable body building and nerve restoring food, containing all the vitamins deficient in ordinary diet. It consists of BONE MARROW, CREAM OF MALT, YOLK OF EGG and neutralised LEMON JUICE.

ROBOLEINE makes good red blood, firm flesh and sturdy bone, and is a valuable food for weakly and growing children.

SAMPLES ON REQUEST

OPPENHEIMER, SON & CO., LTD.  
CLAPHAM ROAD - LONDON, S.W.9.

# GAYLER & POPE LTD.

112-117 High St. Marylebone London W.1

(3 minutes from Harley Street or Bond Street Tube Station.)

WE SPECIALISE IN NURSES' UNIFORMS AT MODERATE PRICES.

Stock Sizes: NURSE CLOTH 9/11, 10/11, 12/11, 14/11.

POPLIN, 15/11, 18/11.

ALPACA, Unlined, 18/11.

Lined throughout, 27/9.

Fadeless Duro, 21/9

and 16/11

Made to measure, 1/6 extra.



from 9/11

THE "NEW BRIGHTON"  
(See above)



from 9/11

THE "RODNEY"  
(See above)



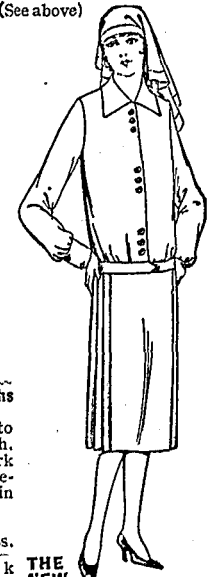
THE "REGENT" COAT.  
Gaberine or Melton Cloth.  
Well Cut and Tailored.  
Shoulders lined. At 42/-  
Sizes: 42, 44 and 46 in.  
Storm Caps, 6/11.

Fadeless Washing Cotton Cloths for Nurses' Dresses.

Made from Double Warp yarn to give durability and strength. Colours: Light Butcher, Dark Butcher, Navy, Heliotrope, Blue-Grey, Black-Grey, etc. Also in a Variety of Stripes.

38 in. wide, 1/3½ per yard. Four yards required for dress.

We close at 1 o'clock Thursdays; open until 7 o'clock Saturdays.



THE NEW "BUCKLAND" DRESS.

THE "AVIS." Nurse's Overall Dress with detachable buttons, inverted pleats at sides. The new inset pockets. Poplin, 15/11 and 18/11 Tricoline, 21/9

APRON CLOTH. G.P., linen-finished. Highly recommended 52 in., yard 1/6½. The "DORIS" ditto. 54 in., yard 1/11½. The "PORTLAND." 54 in., yard 2/3½.

Nurse Cloth, 10/11, 12/11 White Drill or Pique, 11/9 Poplin, Navy and all colours, 18/11, 14/11 Alpaca ... 18/6 Lined Bodice & Sleeves 21/9 Lined throughout ... 25/9 Patterns free.

WRITE FOR NEW CATALOGUE.  
GAYLER & POPE, LTD., High St., Marylebone, London, W.1.

SENT POST FREE.

[previous page](#)

[next page](#)